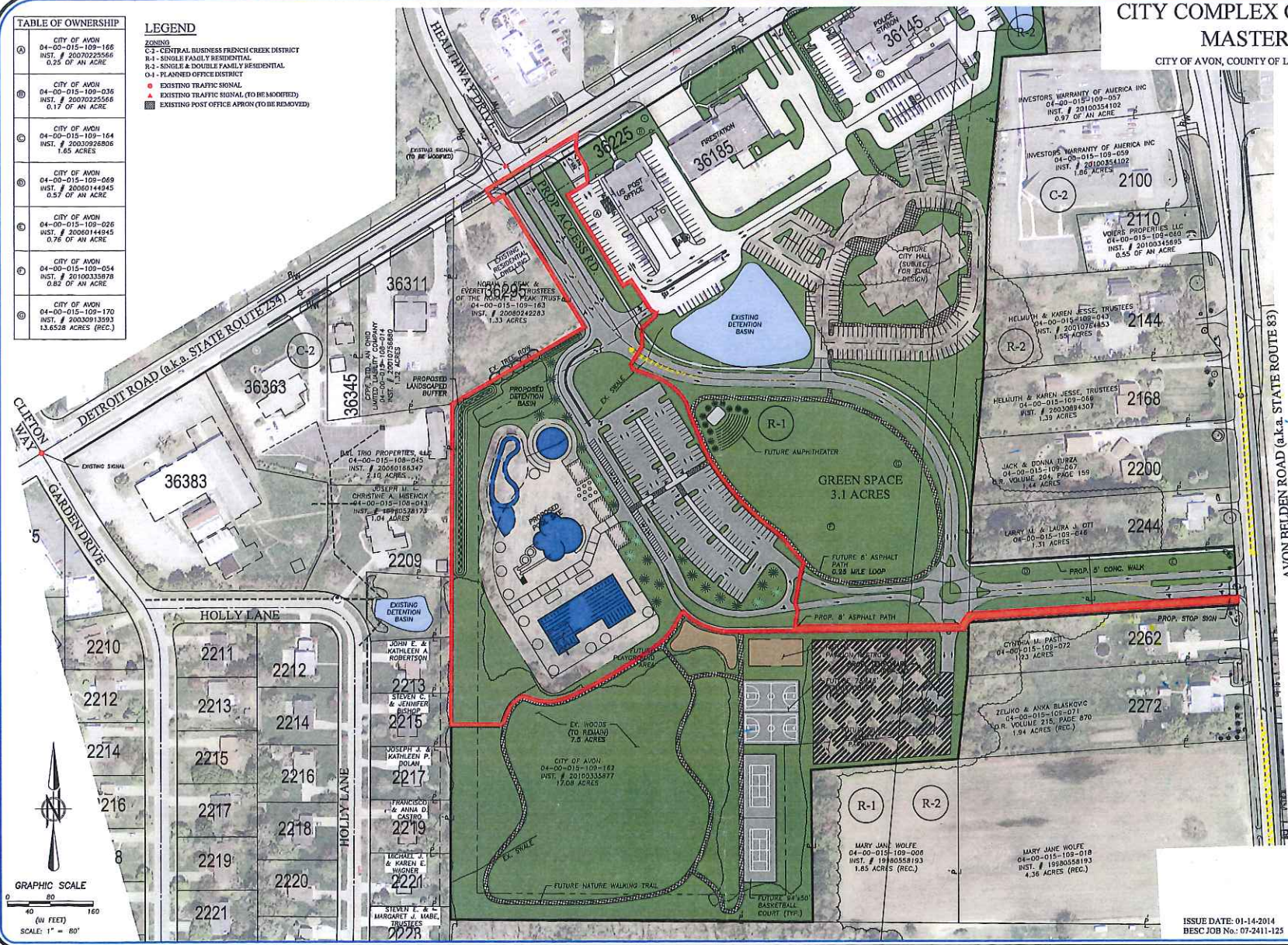


# CITY COMPLEX CONCEPTUAL MASTER PLAN

CITY OF AVON, COUNTY OF LORAIN, STATE OF OHIO

TABLE OF OWNERSHIP	
①	CITY OF AVON 04-00-015-109-166 INST. # 20070225566 0.25 OF AN ACRE
②	CITY OF AVON 04-00-015-109-036 INST. # 20070225566 0.17 OF AN ACRE
③	CITY OF AVON 04-00-015-109-164 INST. # 20030928806 1.63 ACRES
④	CITY OF AVON 04-00-015-109-069 INST. # 20060144945 0.57 OF AN ACRE
⑤	CITY OF AVON 04-00-015-109-026 INST. # 20060144945 0.78 OF AN ACRE
⑥	CITY OF AVON 04-00-015-109-054 INST. # 20100333878 0.82 OF AN ACRE
⑦	CITY OF AVON 04-00-015-109-170 INST. # 20030913593 13.6528 ACRES (REC.)

LEGEND	
<b>ZONING</b>	
C-2	CENTRAL BUSINESS FRENCH CREEK DISTRICT
R-1	SINGLE FAMILY RESIDENTIAL
R-2	SINGLE & DOUBLE FAMILY RESIDENTIAL
O-1	PLANNED OFFICE DISTRICT
⊙	EXISTING TRAFFIC SIGNAL
⊙	EXISTING TRAFFIC SIGNAL (TO BE MODIFIED)
⊙	EXISTING POST OFFICE APRON (TO BE REMOVED)



**SIXMO**  
ARCHITECTS & ENGINEERS

**BRAMHALL**  
ENGINEERING AND SURVEYING CO., INC.  
601 KROGER ROAD AVON, OHIO 44011  
(440) 934-7878 (440) 934-7879 FAX

ISSUE DATE: 01-14-2014  
BESC JOB No.: 07-2411-125

EXHIBIT C