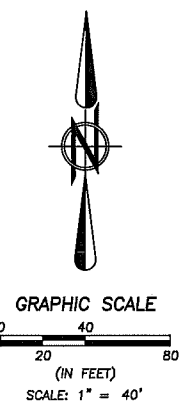
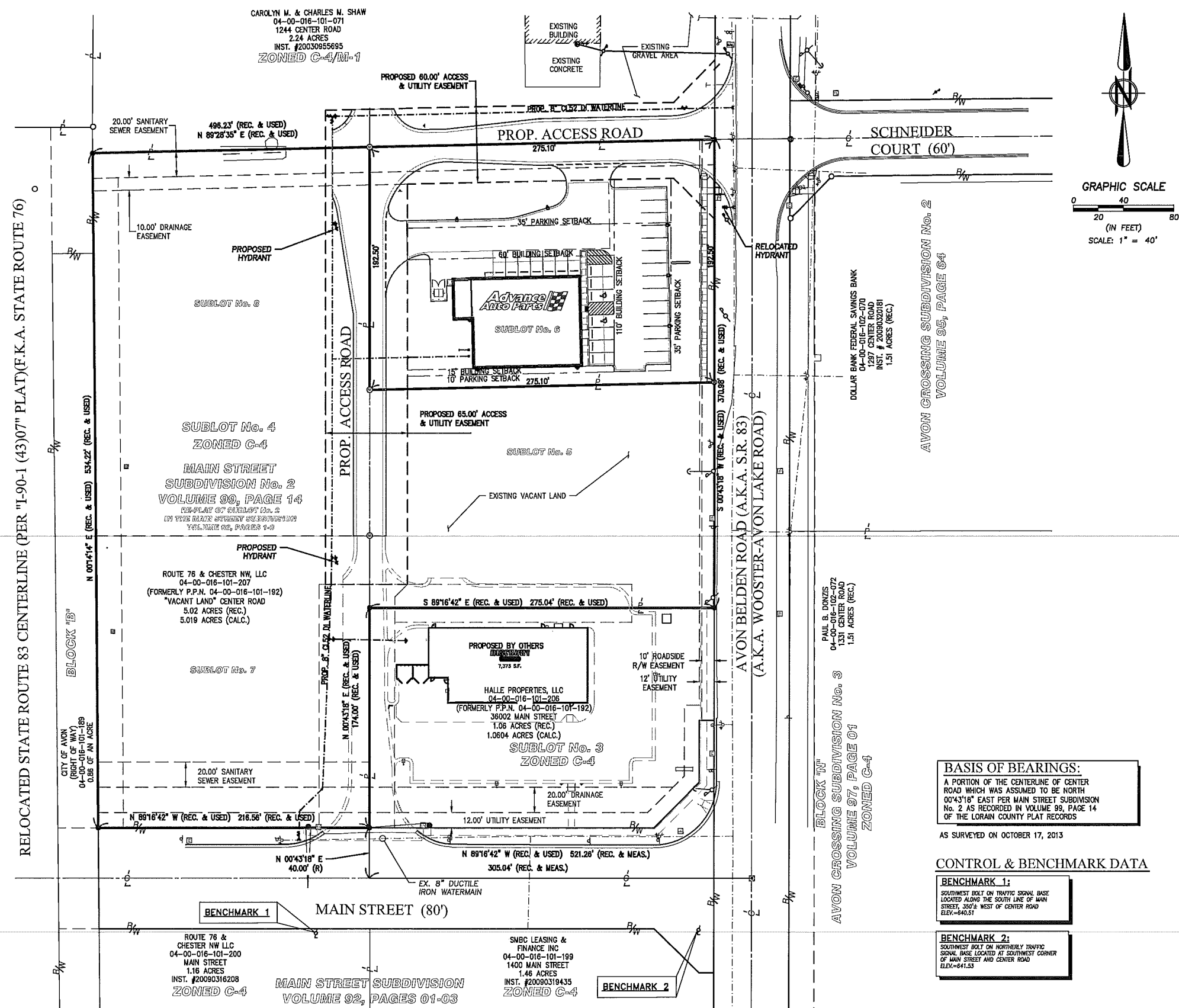


J:\123543D Main St & Center Rd\WaterlineDrawings\C201 Overall Site Planning\_Plot06\_2014 - 10.dwg



**GENERAL NOTES:**

- CONTRACTOR TO REFER TO THE CITY OF AVON STANDARD CONSTRUCTION DRAWINGS REGARDING UTILITY CROSSINGS.
- MINIMUM CLEARANCES BETWEEN UNDERGROUND UTILITIES**  
A MINIMUM 10-FOOT HORIZONTAL SEPARATION (MEASURED OUT-TO-OUT CLEAR) BETWEEN WATER LINES AND STORM/SANITARY SEWERS WILL BE MAINTAINED.  
A MINIMUM 18-INCH VERTICAL CLEARANCE (MEASURED OUT-TO-OUT CLEAR) BETWEEN WATER LINES AND STORM SEWERS WILL BE MAINTAINED AND BETWEEN WATERLINES AND SANITARY SEWERS.
- BOOSTER PUMPS ARE NOT PERMITTED ON SERVICE CONNECTIONS.
- THE CITY OF AVON UTILITY DEPARTMENT SHALL BE CONTACTED 72 HOURS IN ADVANCE OF WORK RELATED TO INTERCONNECTION OF THE NEW WATERMAIN AT MAIN STREET AND S.R. 83. THE CITY OF AVON SHALL OPERATE ALL EXISTING LINE VALVES.
- FOR ADDITIONAL INFORMATION REGARDING SITE IMPROVEMENT FOR ADVANCE AUTO PARTS - SEE PLANS PREPARED BY BRAMHALL ENGINEERING & SURVEYING CO., INC. JOB# 12-3447. FOR ADDITIONAL INFORMATION REGARDING SITE IMPROVEMENT FOR DISCOUNT TIRE - SEE PLANS PREPARED BY ATWELL, LLC.

**BASIS OF BEARINGS:**  
A PORTION OF THE CENTERLINE OF CENTER ROAD WHICH WAS ASSUMED TO BE NORTH 00°43'18" EAST PER MAIN STREET SUBDIVISION No. 2 AS RECORDED IN VOLUME 99, PAGE 14 OF THE LORAIN COUNTY PLAT RECORDS  
AS SURVEYED ON OCTOBER 17, 2013

**CONTROL & BENCHMARK DATA**

- BENCHMARK 1:**  
SOUTHWEST BOLT ON TRAFFIC SIGNAL BASE LOCATED ALONG THE SOUTH LINE OF MAIN STREET, 350'± WEST OF CENTER ROAD  
ELEV.=640.51
- BENCHMARK 2:**  
SOUTHWEST BOLT ON NORTHERLY TRAFFIC SIGNAL BASE LOCATED AT SOUTHWEST CORNER OF MAIN STREET AND CENTER ROAD  
ELEV.=641.53

**EXISTING UNDERGROUND UTILITIES NOTE:**

THE SIZE & LOCATION, BOTH HORIZONTAL AND VERTICAL, OF THE UNDERGROUND UTILITIES SHOWN HEREON, HAVE BEEN OBTAINED BY A SEARCH OF AVAILABLE RECORDS. VERIFICATION BY FIELD OBSERVATION HAS BEEN CONDUCTED WHERE PRACTICAL. HOWEVER, BRAMHALL ENGINEERING AND SURVEYING COMPANY, INC. DOES NOT GUARANTEE THE COMPLETENESS NOR ACCURACY THEREOF.

<p><b>OHIO UTILITIES PROTECTION SERVICE</b></p> <p>BEFORE YOU DIG ANYWHERE IN OHIO! CALL 1-800-362-2764 OR 8-1-1 (TOLL FREE) OHIO LAW ENFORCEMENT WILL NOT REMOVE YOUR UNDERGROUND SERVICES FOR UTILITIES BEFORE YOU DIG. DRILL, BLAST OR DITCH! OHIO MEMBERS MUST BE CALLED BEFORE DIGGING! WWW.OUP.ORG</p>	<p><b>OHIO OIL &amp; GAS PRODUCERS UNDERGROUND PROTECTION SERVICE</b></p> <p>TWO WORKING DAYS BEFORE YOU DIG CALL 1-800-925-0988 (TOLL FREE) WWW.OGUPS.COM</p>
--	--

DATE	BY	DESCRIPTION
02-18-2014	JPA	ISSUE TO PLANNING COMMISSION
03-05-2014	JPA	REVISIONS PER CITY COMMENTS AND COORDINATION WITH DISCOUNT TIRE

DRAWN BY: NDS

CHECKED BY: APA

**BRAMHALL**  
ENGINEERING AND SURVEYING CO., INC.  
801 MOORE ROAD AVON, OHIO 44011  
(440) 934 - 7878 (440) 934 - 7879 FAX

PREPARED FOR:  
ROUTE 76 & CHESTER NW, LLC  
23240 CHAGRIN BLVD, SUITE 250  
BEACHWOOD, OHIO 44122

**WATERLINE EXTENSION**  
MAIN STREET TO CENTER ROAD (SR 83)  
OVERALL SITE PLAN  
CITY OF AVON, COUNTY OF LORAIN, STATE OF OHIO

SHEET  
**C201**  
JOB NO.  
13-3543D