


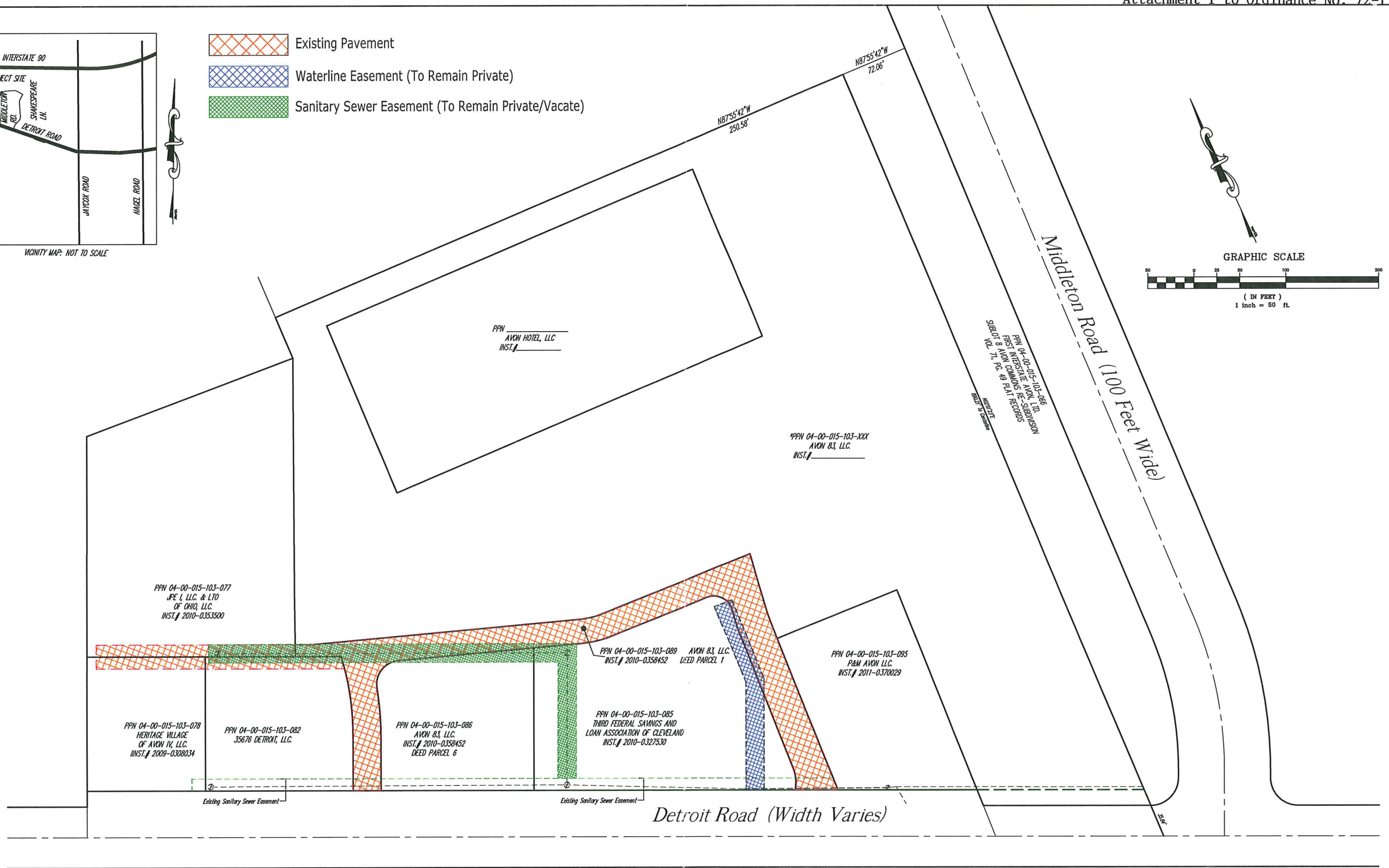
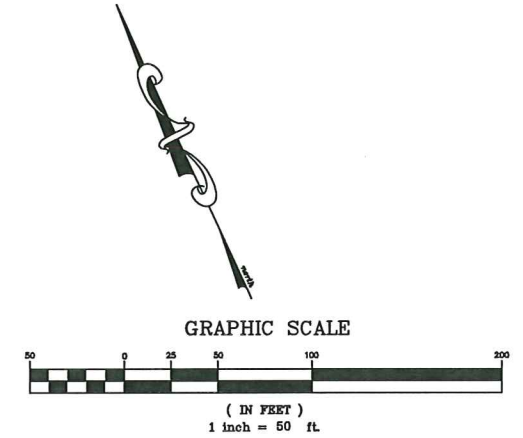


VICINITY MAP: NOT TO SCALE

-  Existing Pavement
-  Waterline Easement (To Remain Private)
-  Sanitary Sewer Easement (To Remain Private/Vacate)



REV. No.	DATE	BY	CHK'D

DATE: 01/30/13
 SCALE: HOR. 1"=50'
 VERT. 1"=0'
 FOLDER: DWG/SURVEYS
 FILENAME: Exist. & Prop. Easement
 TAB: Exist. & Proposed Easement
 DRAWN: J.P.B.

The MarketPlace at Avon
 PART OF ORIGINAL AVON TOWNSHIP SECTION 15
 NOW IN THE
 CITY OF AVON - LORAIN COUNTY - STATE OF OHIO



POLARIS ENGINEERING & SURVEYING, INC.
 34600 CHARDON ROAD - SUITE D
 WILLOUGHBY HILLS, OHIO 44094
 (440) 944-4433 (440) 944-3722 (Fax)
 www.polaris-es.com

APPROVED EASMENTS
 TO BE VACATED
 OR REMAIN PRIVATE

CONTRACT No.	
11059	
SHEET	OF
1	3