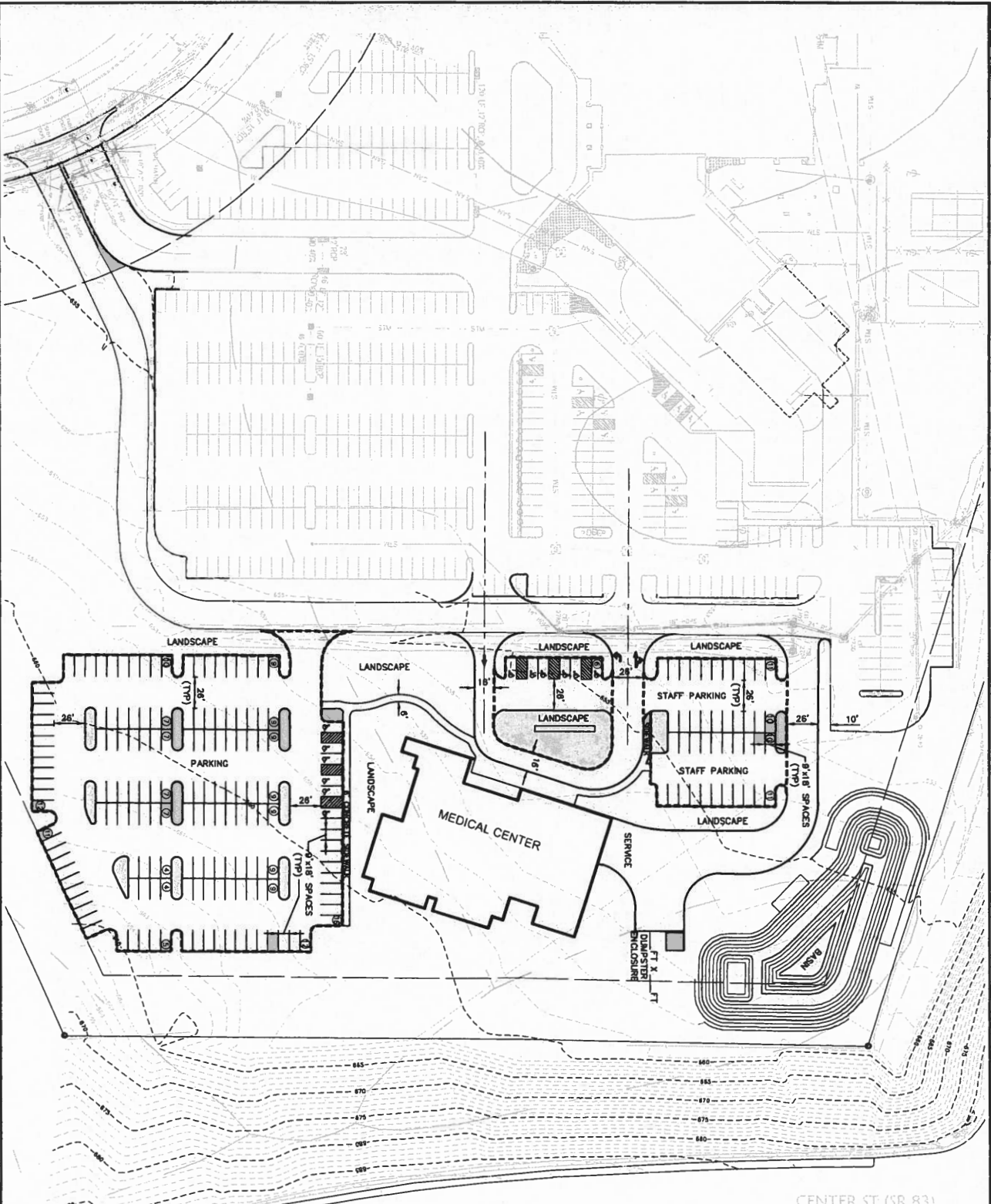
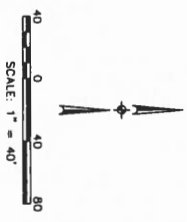


- LEGEND -**
- EXISTING BUILDING
 - PROPOSED MEDICAL CENTER
 - 1st Floor : 19,000 sf
 - 2nd Floor : 18,000 sf
 - AREA OF PROJECT
 - NEW BASIN
 - < MAIN ENTRANCE
 - < SERVICE / AMBULANCE
 - ← SCC VEHICULAR CIRCULATION (Patient Drop-off / Departure)
 - # PARKING COUNT
-193 Required / 213 Provided (Refer to KS Drawing)
 - ② NUMBER OF STORIES
 - T DUMPSTER ENCLOSURE



- PARKING AREA = 80,782 SF
 - ▭ LANDSCAPE ISLAND 7,442 SF
 - 9.21% GREEN SPACE
- BUILDING AREA = 38,550 SF
 1 SPACED/200 SF
 193 PARKING SPACES REQUIRED
- PARKING SUMMARY:**
 213 TOTAL SPACES PROVIDED
 12 HC SPACES
 43 STAFF SPACES
 159 PUBLIC SPACES



SHEET 1	CONCEPT SITE PLAN	 KS Associates, Inc. 260 Burns Road, Suite 1700	DATE: _____ DRAWN BY: _____	DATE: _____	DESCRIPTION	BY
------------	-------------------	--	--------------------------------	-------------	-------------	----