



The trees are planted
During the Spring &
Fall Season for best results.

Trees are purchased from
local nurseries.
Size of Tree Trunks are
1.5 inch caliper.



Please check one:

- In Memory of
- Dedication
- Celebration

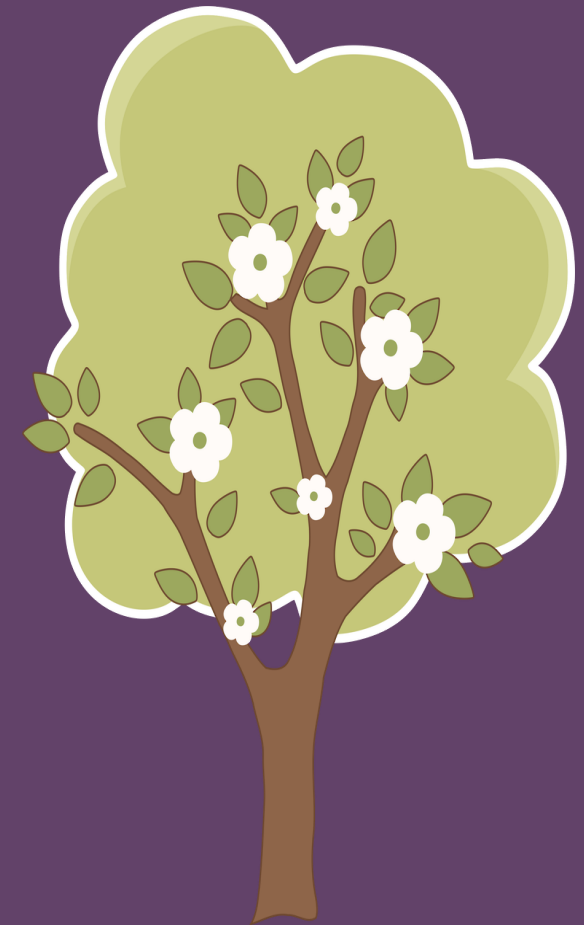
Person to be Honored

PAVER INSCRIPTION:

**8x8 brick allows 6 lines of text with
15 characters per line.**

**Use of Symbols/Logos will permit no more
than 15 characters and 3 lines of text.**

City of Avon Memorial Tree Program



Established 2003

Contact Susan Beres for more
information 440-937-4461

The City of Avon Memorial Tree Program, is a lasting tribute while enhancing our natural environment in our beautiful City Parks. Purchase a tree in memory of a loved one, to dedicate to a friend or family member, or to commemorate a special event. Neighbors and guests in our Parks share that remembrance and harmony for present and future generations.



Please select a site below:

- Every Child’s Playground
- Northgate Park
- Schwartz Park
- Veterans Memorial Park

Please select a tree below:

- Autumn Blaze Maple**
A cross between red & silver maple from Ohio native species. A large, fast growing tree adaptive to all soils. Deeply lobed leaves with brilliant orange to red fall color.
- Autumn Brilliance Serviceberry**
Green foliage with white flowers in the early spring followed by sweet June berries loved by birds. This all season small tree has great red to orange fall color.
- Scarlett Oak**
Large native oak similar to the common Pin Oak. Has a superior red fall color.
- Royal Raindrops Crab Apple**
This is a small Crab Apple. New purple leaves hold their color with pinkish flowers turning into tiny red apples that are eaten by wildlife. Leaves turn bronze to orange color in the fall.
- Wildfire Black or Sour Gum**
Medium sized native tree that thrives in all types of soil. It has a burgundy new growth turning glossy green, with a brilliant fall color from yellow, orange, scarlet to purple
- Heritage River Birch**
Large, fast growing tree. Selected from native species and has attractive tan to creamy white bark with yellow fall color.

Personal Information

Name of Donor

Address

City

Zip Code

Phone Number

Email



The tree price is \$395.00 and includes the cost of planting, staking, mulch and care. It also includes an engraved paver.

Tree guaranteed for 1 year.

**Planting will take place in the Spring and Fall season.*

**Check or Credit Card accepted at
Avon Parks Department
35001 Schwartz Rd. 440-937-4461**